

SKWA NEWS

Southwest Kerry Women's Association, The O'Connell Centre, Carhan Road, Caherciveen, Co Kerry

Phone: 066-9473397 Fax: 066-9473398 Email: skwanet@iol.ie

November 2003

EDITORIAL

Welcome to our first newsletter for some time!! We hope to keep you informed of what is happening in the area that is of interest to women and also of regional and national happenings. We want to hear from you as well, as this is a two-way venture and would welcome your letters and articles that we could consider publishing. Please talk to us!! Call to the office or phone, fax or email as per the numbers above.

ABOUT SKWA

The Southwest Kerry Women's Association was founded in 1992 and we have a core of original founder members plus some additions who have been with the Association since 1997.

Our ethos is one of equality for women and to create awareness of women's issues.

The network covers the geographical area Kells to Sneem and is open to all women. We have an office at the O'Connell Centre in Caherciveen which is open between 9.00am and 1.00pm Monday to Friday, so please do call in if you are needing help or information on women's issues. Mairead Lynch our Network Co-ordinator has a wealth of knowledge and will be pleased to meet you, and if she cannot help you she will know some-one who will!!

In these days of cutbacks in funding women's issues tend to be pushed aside,

and there is a need for all women's voices to be heard. In the few years that we have been working we have succeeded in bringing different projects for women to the area, i.e. the NOW Project, UCC Outreach in Women's Studies and the English Literature Degree course that is currently running. We've supplied courses under the Women's Education Initiative, we provide Bereavement Counselling and we represent women in Southwest Kerry by working with many regional and national bodies including the 'Open Door Network', AONTAS, National Women's Council of Ireland, National Collective of Community-based Women's Networks, Citizens Information Centre, Guidance Network, Women's Human Rights Project, Banúlacht and the South Kerry Development Partnership.

At present we are running a new project under the Equality for Women Measure, funded by the Department of Justice Equality and Law Reform, the Learning for Living Project. We have done a great deal since our inception and with your interest and support there is much more that can be achieved to enhance the lives of women in our area.

LEARNING TO DRIVE?

Are you a woman over 50 without a driving licence? We can help and support you to apply for a licence and help with the Theory Test

Phone Mairead or Nancy on 066 9473397



LEARNING FOR LIVING PROJECT

This is the project mentioned earlier and is funded under the Equality for Women Measure.

In keeping with the aims of the Southwest Kerry Women's Association, this project brings two part-time development workers into the community to work with women and women's groups.

A primary focus of the project is the encouragement of women (40+ years) who would like to meet socially and share interests and ideas, to do just that.

- So, maybe you have an interest or idea that you've been thinking about but don't know if there would be others interested too?
- Perhaps you would like to meet up with other women, once in a while, but, for some reason or another, you find it difficult?

From now until March 2005, Mairead and Nancy are available to meet with you and provide practical support.

Mairead and Nancy are planning open meetings in various areas. These meetings will consist of speakers of interest to women and there will be time to have an exchange of views to look at what supports are needed. Please keep your eyes open for notice of these meetings which we hope to hold before Christmas. We will also be advertising the meetings in the Kerryman. In the meantime if you wish to discuss the above please contact **Mairead or Nancy on 066 9473397**.

SHADOW AND LIGHT COMPETITION/EXHIBITION

The Shadow and Light Competition is about raising awareness of the effects of domestic violence on women and children. It is a multi media competition that has been organised by SKWA and **The Open Door Network** (*Kerry's re-*

sponse to violence against women and children). The exhibits range from sculpture, poetry, art and photography and are on show at the exhibition in the New Library, Caherciveen, which was launched on 25th November and will be running till 3rd December when it moves to Siamsa Tire, Tralee until Dec. 10th. Please come along to the exhibition which is a thought-provoking and moving illustration of the effects of domestic violence.

In conjunction with the Shadow and Light Exhibition, a seminar 'Working with Crisis' is also being held on Friday 5th December 2003, in Siamsa Tire, Tralee. The aim of this seminar is to raise awareness amongst workers and volunteers of the effect of working with crisis and to identify methods of support and supervision. This seminar is open to all and application forms are available at the exhibition or by contacting the Open Door Network, 2 Denny Street Tralee.

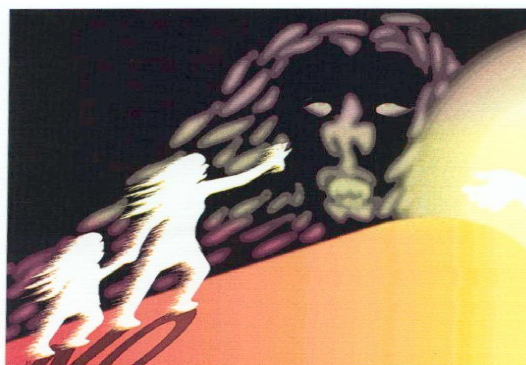


Illustration by J.J. Sheehy

BEREAVEMENT COUNSELLING

We have been running Bereavement Counselling for two years now. The service is free and completely confidential. If you feel you need to talk to someone because you are finding it hard to come to terms with a loss in your life.

Please call 087 9230160

and make an appointment. This service is available **every Friday** in Caherciveen and is open to all individuals and families.